





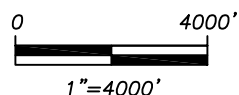


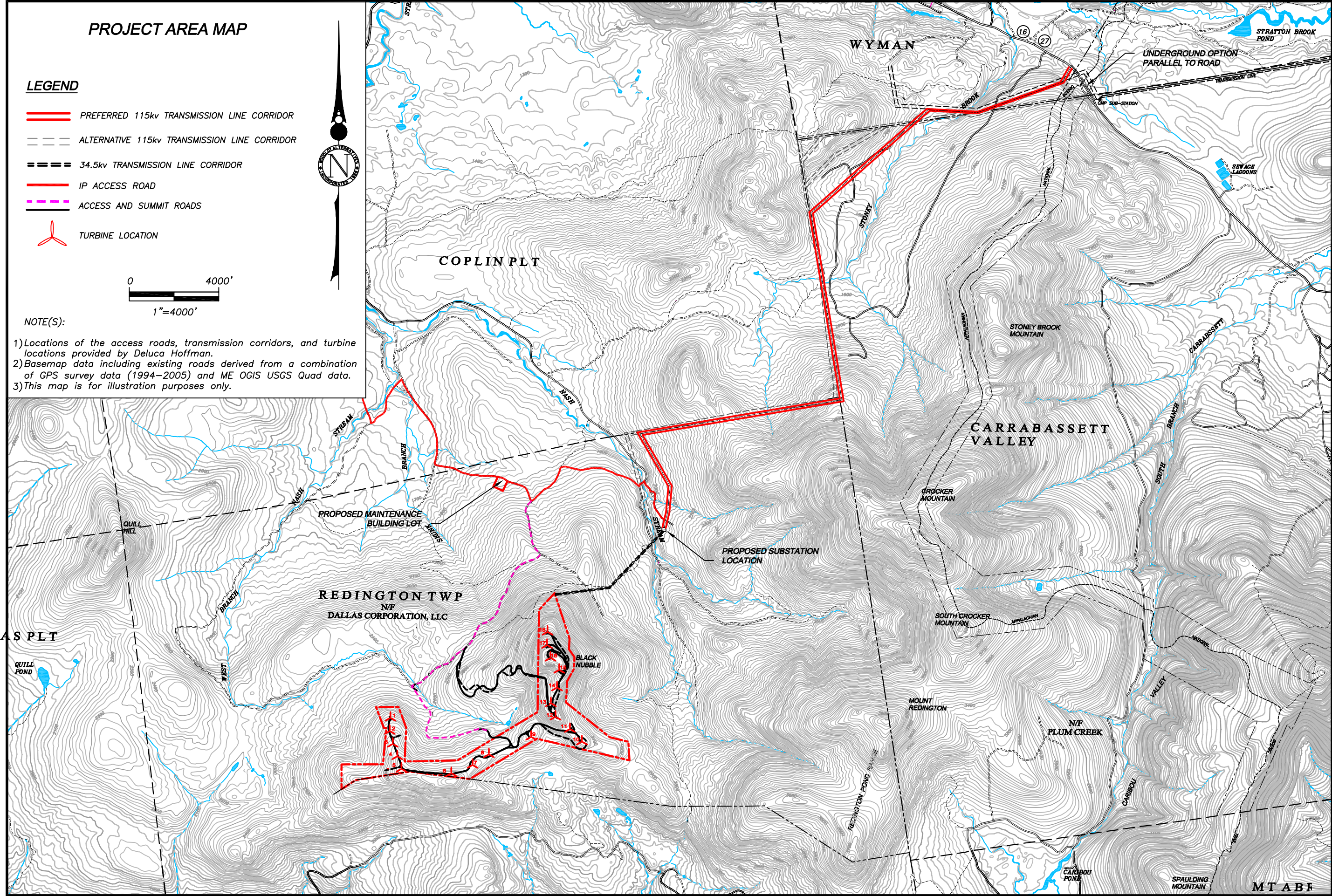
PROJECT AREA MAP

LEGEND

-  PREFERRED 115kv TRANSMISSION LINE CORRIDOR
-  ALTERNATIVE 115kv TRANSMISSION LINE CORRIDOR
-  34.5kv TRANSMISSION LINE CORRIDOR
-  IP ACCESS ROAD
-  ACCESS AND SUMMIT ROADS
-  TURBINE LOCATION



NOTE(S):
 1) Locations of the access roads, transmission corridors, and turbine locations provided by Deluca Hoffman.
 2) Basemap data including existing roads derived from a combination of GPS survey data (1994-2005) and ME OGIS USGS Quad data.
 3) This map is for illustration purposes only.



| | | | | |
|-----------|---|-------------------------------|----------|------|
| NO. | 1 | REVISED FROM 2005 APPLICATION | 06/22/07 | DATE |
| REVISIONS | | | | |

SHEET TITLE: PROJECT AREA MAP
 SCALE: 1"=4000'
 DATE: JUNE 2007

PROJECT: BLACK NUBBLE WIND FARM
 MAINE MOUNTAIN POWER, LLC
 ADDRESS: 57 RYDER ROAD
 YARMOUTH, MAINE

PREPARED BY:  **WOODLOT**
 ALTERNATIVES, INC.
 ENVIRONMENTAL CONSULTANTS
 study-arec.dwg

PROJ. NO. 102127
 FIGURE NO. 7-1

MTABF